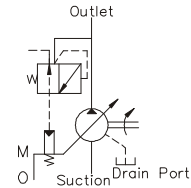
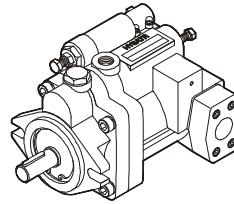


### PV Series Variable Volume Piston Pumps

- Pmax : 280 bar (4000 psi)
- Qmax : 8 cc/rev ~ 100 cc/rev
- Mounting Type : SAE 2-bolt DIN 4-bolt
- Fluid : ISO VG32 or VG68
- Viscosity & Temp : 20~200 cSt & -5 °C to 60 °C
- Filtration : 100 Microns (150 mesh) Absolute or Finer
- Alignment and installation of pumps : within 0.05 TIR (0.002 in)
- Many options in control type selection
- Applications: Construction, Agricultural, Excavator and Industrial Vehicle



### Ordering Code -PV Piston Pumps

PV	36	A	4	R	S	F	-20
Series No	Displacement cc/rev (in <sup>3</sup> /rev)	Control Types	Pressure Compensating range	Rotation	Port Position	Mounting	Design No. Shaft Option Flange Option
PV: Variable Volume Piston Pump	8, (0.5) 16, (1.0) 22, (1.3) 36, (2.1) 46, (2.7) 70, (4.3) 100, (6.1)	<ul style="list-style-type: none"> <li>Standard</li> <li>A : Pressure Compensating (Manual)</li> <li>Option</li> <li>B : Pressure Compensating Type Pilot (Remote Control)</li> <li>C : Two Pressure - Two Flow Control Type</li> <li>D : Solenoid Cut- Off Control Type</li> <li>E : Two Pressure Cut- Off Control Type</li> <li>F : Two-Pressure, Two-Flow Control Type by Solenoid Valve</li> <li>G : Two-Pressure, Two-Flow Control Type by Solenoid Valve</li> <li>HL : Load Sensing Compensator</li> </ul>	0: 10~ 35 bar (143~ 500 psi) 1: 20~ 70 bar (286~1000 psi) 2: 30~140 bar (429~2000 psi) 3: 30~210 bar (429~3000 psi) 4: 50~280 bar (720~4000 psi)	R: Clockwise (CW) L: Counter-Clockwise (CCW) Viewed from Shaft End	S: Side Port R: Axial Port ( Rear Port )	F: Flange Mounting L: Foot Mounting	Design No. 20: PT(Rc) Flange Kits, Straight Key 2080: PF(G) Flange Kits, Straight Key 2090: NPT Flange Kits, Straight Key

### Ratings

Model	Volume cc/rev in <sup>3</sup> /rev	Delivery at No Load lpm (USgpm)				Pressure Compensating Range		MAX Setting Pressure		Drive Speed rpm		Weight kgf (lbs)
		1000rpm	1200rpm	1500rpm	1800rpm	bar	(psi)	bar	(psi)	Min.	Max.	
PV-8*-0**-20 PV-8*-1**-20 PV-8*-2**-20 PV-8*-3**-20	8.0 (0.50)	8.0 (2.1)	9.6 (2.5)	12.0 (3.2)	14.4 (3.8)	10 ~ 35 20 ~ 70 30 ~ 140 30 ~ 210	(143 ~ 500) (286 ~ 1000) (429 ~ 2000) (429 ~ 3000)	35 70 140 210	( 500) (1000) (2000) (3000)	500	2000	7.5 (16.4)
PV-16*-0**-20 PV-16*-1**-20 PV-16*-2**-20 PV-16*-3**-20	16.5 (1.01)	16.5 (4.4)	19.8 (5.2)	24.7 (6.5)	29.7 (7.8)	10 ~ 35 20 ~ 70 30 ~ 140 30 ~ 210	(143 ~ 500) (286 ~ 1000) (429 ~ 2000) (429 ~ 3000)	35 70 140 210	( 500) (1000) (2000) (3000)	500	2000	10.5 (23.0)
PV-22*-0**-20 PV-22*-1**-20 PV-22*-2**-20 PV-22*-3**-20	22.2 (1.34)	22.0 (5.8)	26.4 (7.0)	33.0 (8.7)	39.6 (10.5)	10 ~ 35 20 ~ 70 30 ~ 140 30 ~ 210	(143 ~ 500) (286 ~ 1000) (429 ~ 2000) (429 ~ 3000)	35 70 140 210	( 500) (1000) (2000) (3000)	500	2000	10.5 (23.0)
PV-36*-0**-20 PV-36*-1**-20 PV-36*-2**-20 PV-36*-3**-20	36.0 (2.14)	36.0 (9.2)	42.0 (11.1)	52.5 (13.9)	63.0 (16.6)	10 ~ 35 20 ~ 70 30 ~ 140 30 ~ 210	(143 ~ 500) (286 ~ 1000) (429 ~ 2000) (429 ~ 3000)	35 70 140 210	( 500) (1000) (2000) (3000)	500	2000	23.0 (51.0)
PV-46*-0**-20 PV-46*-1**-20 PV-46*-2**-20 PV-46*-3**-20	46.0 (2.76)	46.0 (11.9)	54.0 (14.3)	67.5 (17.9)	81.0 (21.5)	10 ~ 35 20 ~ 70 30 ~ 140 30 ~ 210	(143 ~ 500) (286 ~ 1000) (429 ~ 2000) (429 ~ 3000)	35 70 140 210	( 500) (1000) (2000) (3000)	500	2000	23.0 (51.0)
PV-70*-1**-20 PV-70*-3**-20 PV-70*-4**-20	70.0 (4.27)	70.0 (18.5)	84.0 (22.2)	105.0 (27.7)	126.0 (33.3)	20 ~ 70 20 ~ 210 20 ~ 280	(286 ~ 1000) (286 ~ 3000) (286 ~ 4000)	70 210 280	(1000) (3000) (4000)	500	2000	37.0 (82.0)
PV-100*-1**-20 PV-100*-3**-20 PV-100*-4**-20	100.0 (6.10)	100.0 (26.5)	120.0 (31.8)	150.0 (39.7)	180.0 (47.6)	20 ~ 70 20 ~ 210 20 ~ 280	(286 ~ 1000) (286 ~ 3000) (286 ~ 4000)	70 210 280	(1000) (3000) (4000)	500	2000	58.0 (129.0)